

Accommodation Information

“Weekly-mansion KAMEIDO”

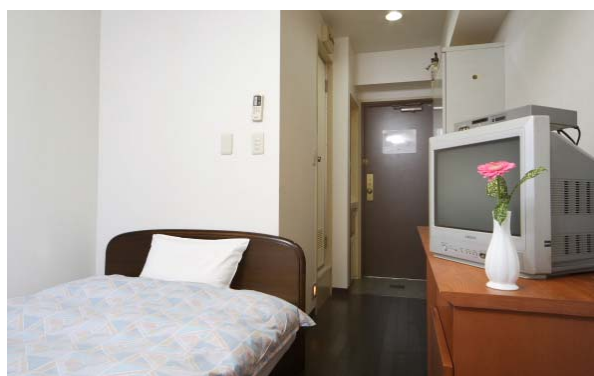
We have made block booking at Weekly-mansion Kameido from July 14th to August 10th. If you need to change the check-in date, please inform us at apss2010@bridge.t.u-tokyo.ac.jp by June the 25th. You can change the check-out date when you arrive at the housing while we recommend students needing accommodation after August the 10th contact us in advance. If you have a particular reason to decline this accommodation and would like to arrange accommodation by yourself, please inform the summer school secretariat by June 25th.



Weekly mansion Kameido



Lobby



Single room furniture



Coin laundry facility

Location: 6-32-1 Kameido, Koutou-ku, 136-0071 Tokyo, Japan

Tel: +81-3-5626-0701 (from inside Japan: 03-5626-0701)

Homepage: <http://www.wmt.co.jp/en/location/kameido/index.html>

Fee: 5,200 JPY per night

Room: Studio room for each person

- One single size bed
- Private bathroom
- Free Internet access (NOT wireless)
- TV
- Small kitchen

Other service:

- On site laundry
- There are many restaurants and grocery stores around the dormitory.

Access: 5 minutes walk from JR train station “Kameido” (refer to Transportation Guide in a separate document for a map and more detailed instructions)

From NARITA airport

Narita Airport → (“Keisei skyliner”, 1 hour)

→ “Funabashi” → (JR train “Sobu” line, 20 min.) → “Kameido”

From Univ. Tokyo (APSS site)

UT → (Subway, 5 min.) → “Iidabashi”

→ (JR train “Sobu” line, 15 min.) → “Kameido”