

# TRANSPORTATION GUIDE

## A. ACCESS FROM THE AIRPORTS TO THE ACCOMODATION

### A.1. FROM NARITA AIRPORT TO KAMEIDO STATION

After you go through customs, follow signs to Keisei railway. Board a Limited Express train bound for Ueno/Nippori, and get off at Keisei Funabashi station to change to JR Sobu line. Board a local train on this line to go to Kameido station. See Figure 1 to learn more about ticket fares and rough traveling distance and time. Refer to A.3. to go from Kameido station to the accommodation.

### A.2. FROM HANEDA AIRPORT TO KAMEIDO STATION

After you go through customs, follow signs to Tokyo monorail. Board a Sub Rapid train bound for Hamamatsucho. At Hamamatsucho, change to JR Keihin-tohoku line and board local train to go to Akihabara station, then change to Kameido station. See Figure 2 to learn more about ticket fares and rough traveling distance and time. Refer to A.3. to go from Kameido station to the accommodation.



Figure 1. Route from Narita airport to Kameido



Figure 2. Route from Haneda airport to Kameido

### A.3. FROM KAMEIDO STATION TO THE ACCOMODATION

At Kameido station, go out the East exit. Follow the red route in Figure 3 to Weekly Mansion Kameido for approximately 5 minutes. Refer to section B for check-in instruction.



Figure 3. Map around Weekly Mansion Kameido

### B. CHECK-IN AT WEEKLY MANSION KAMEIDO

You can check-in by yourselves between 3pm and 12 midnight on July the 14th. If you need help in check-in, please contact a student from the University of Tokyo who will be around the reception desk from 15:00 until 20:00 on July 14<sup>th</sup>. When checking in, you are required to specify your check-out date to the dormitory staff and pay the corresponding lodging expense. You can pay either in cash or by credit cards. Please refer to “Accommodation Information” for more detail.

### C. FROM THE ACCOMODATION TO THE UNIVERSITY OF TOKYO

Walk to Kameido station and board a local train on JR Sobu line to go to lidabashi station. At lidabashi station, change to Metro Namboku line and board a train to go to Todai-mae station. Get off at Todai-mae station and go out Exit 1. It takes about 8 minutes to walk to the Faculty of Engineering building #1 at the University of Tokyo Hongo campus (Figure 5). See Figure 4 to learn more about ticket fares and rough traveling distance and time.

On board for 21 minutes (Traveling for 27 minutes)  
 Total Fare(One-way) 320 yen Distance:10.2 km

	Train Info.	Departs Arrives	Distance	Fare	Seat	Express Surcharge
◆ Kameido	 <b>Sobu Line(Local)</b> Local	[16min.]	7.5km	160yen		
◆ lidabashi	 <b>Tokyo-Metro Namboku Line</b>	[5min.]	2.7km	160yen		
◆ Todai-Mae						

Figure 4. Train route from Kameido station to the University of Tokyo

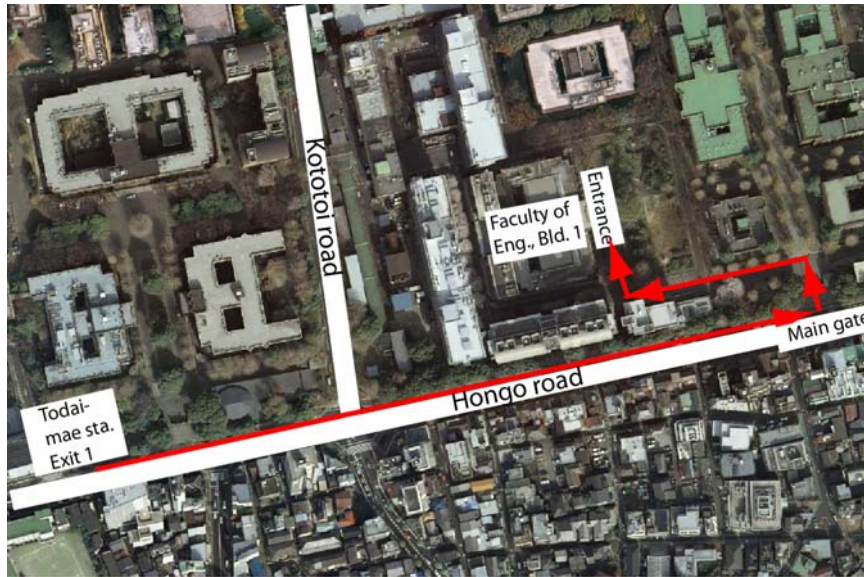


Figure 4. Access map from Todai-mae station to the University of Tokyo

#### D. EMERGENCY CONTACTS

Remember the numbers below for emergency contacts. If you have trouble navigating to the accommodation, please contact us.

- Dinh Hung Minh: 080-5642-2210
- Tsukasa Mizutani: 090-9871-3562
- Dr. Tomonori Nagayama: 090-6702-7992

#### E. APPENDIX

You can search train routes via the following English website

<http://www.jorudan.co.jp/english/>